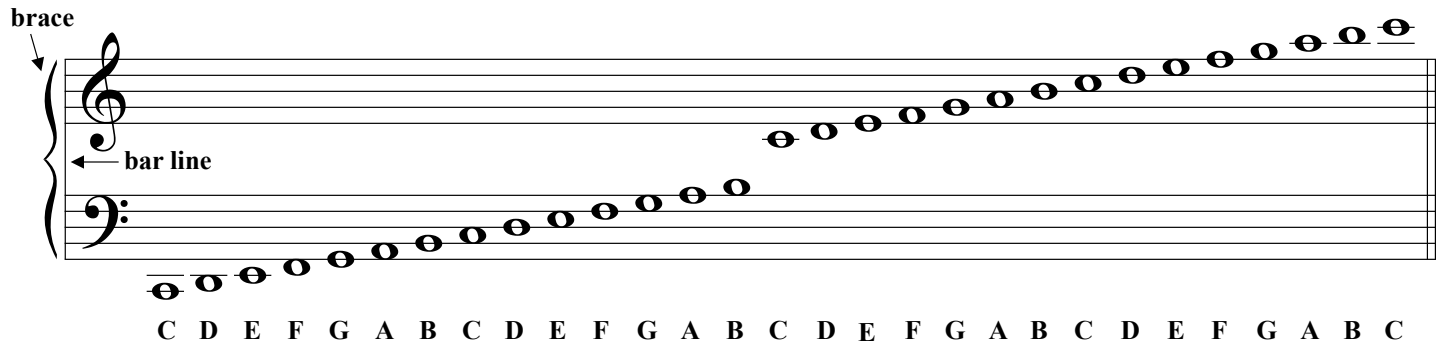
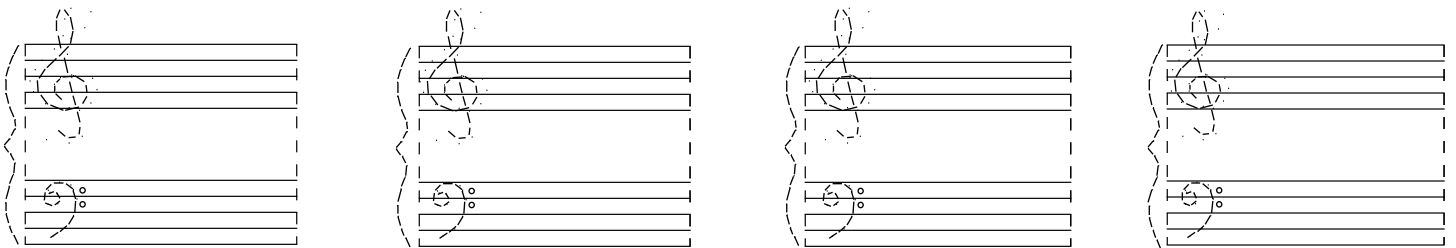


The Grand Staff

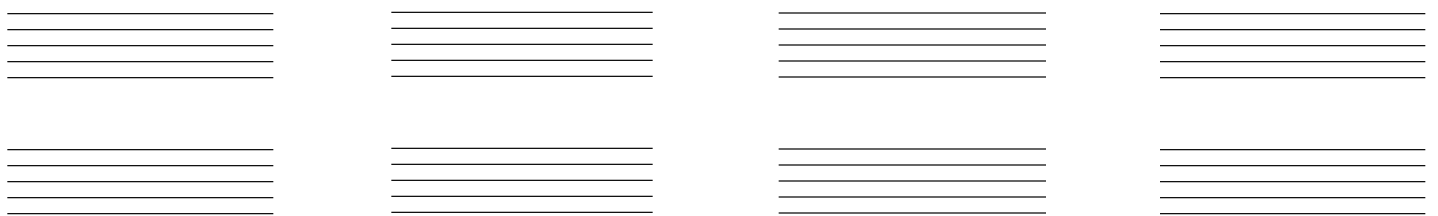
The **grand staff** is created by joining the treble staff and the bass staff with a **brace** and **bar line**.



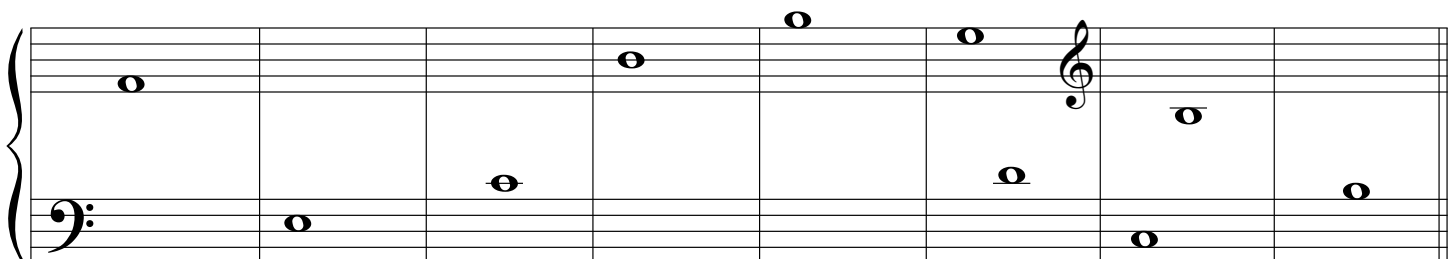
1. Practice creating the grand staff by tracing the braces, bar lines, and clefs.



2. Using the staves below, create four grand staves by adding braces, bar lines, and clefs.



3. Write the letter name for each note.



— — — — — — — — —